



DTES STRONGER.
TOGETHER.
ECONOMIC REVITALIZATION PLAN

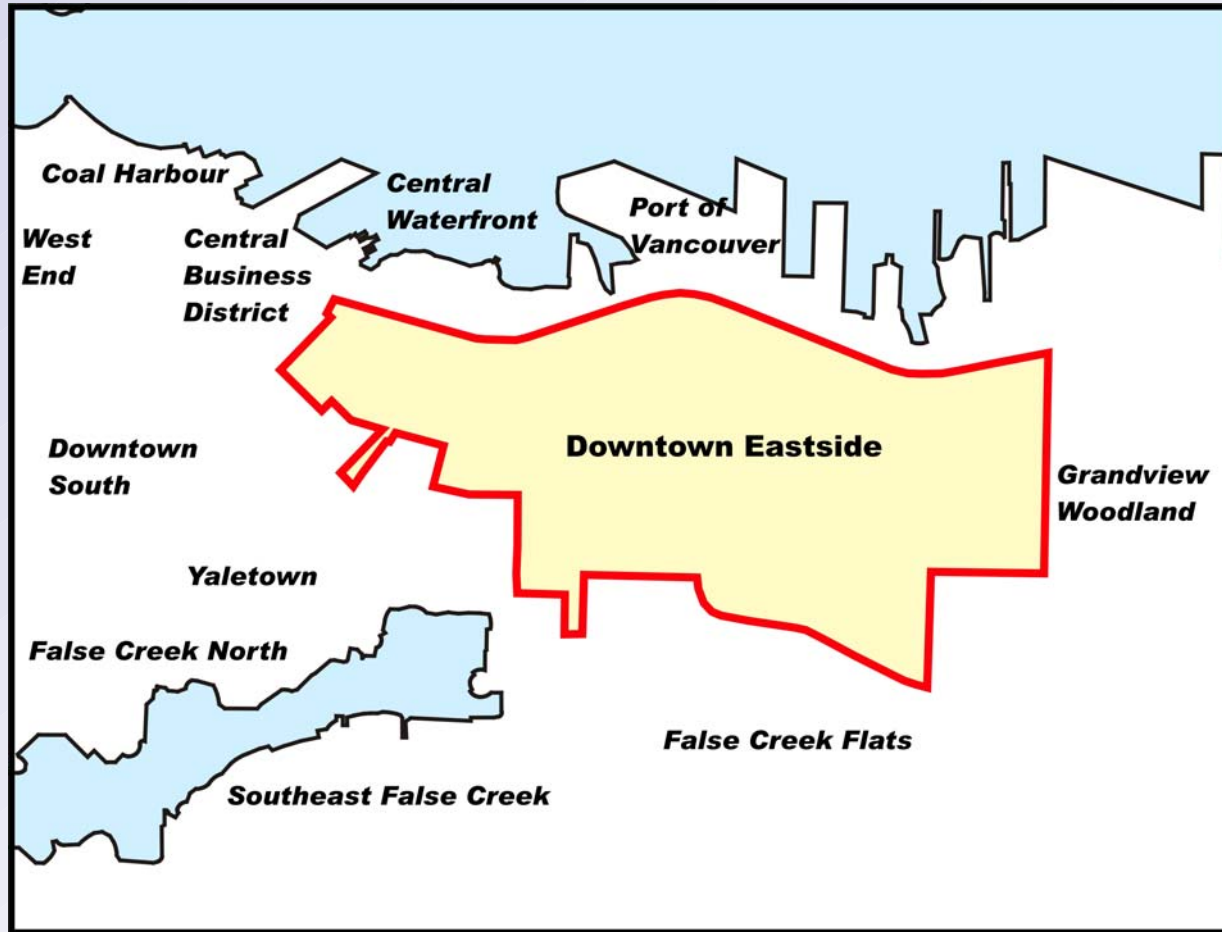
Downtown Eastside Economic Revitalization Plan

Toronto Briefing

April 2004



Downtown Eastside and Adjacent Developing Areas

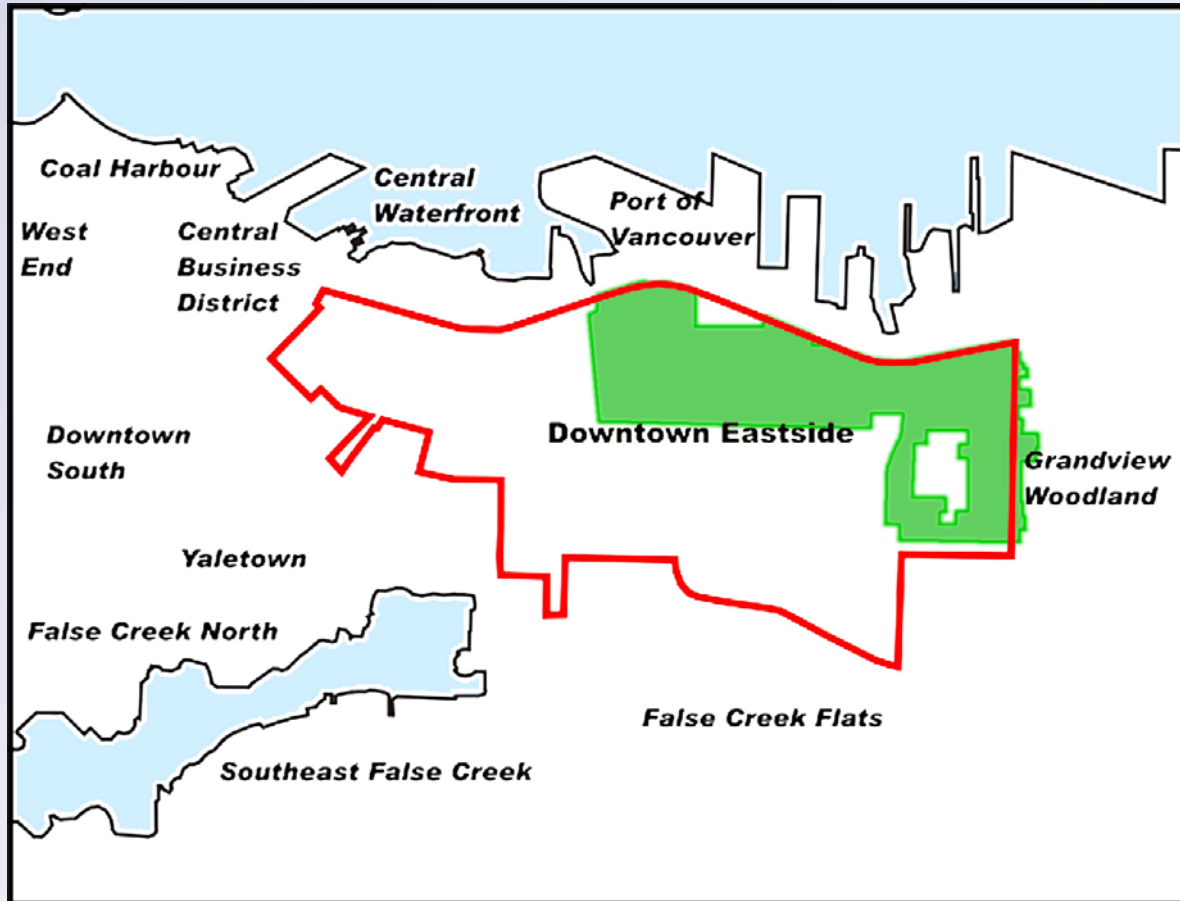


Revitalization Without Displacement

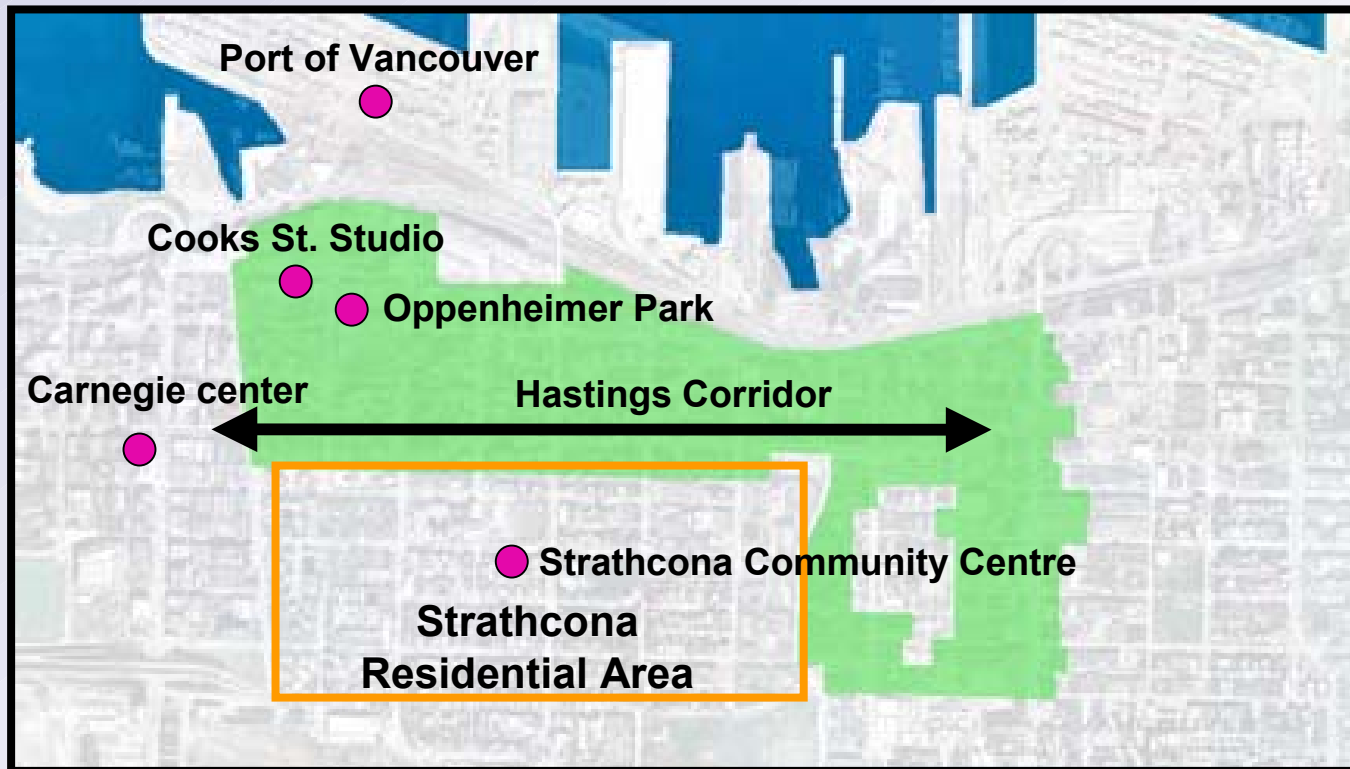


**DTES STRONGER.
TOGETHER.**
ECONOMIC REVITALIZATION PLAN

Strathcona Business Improvement Area



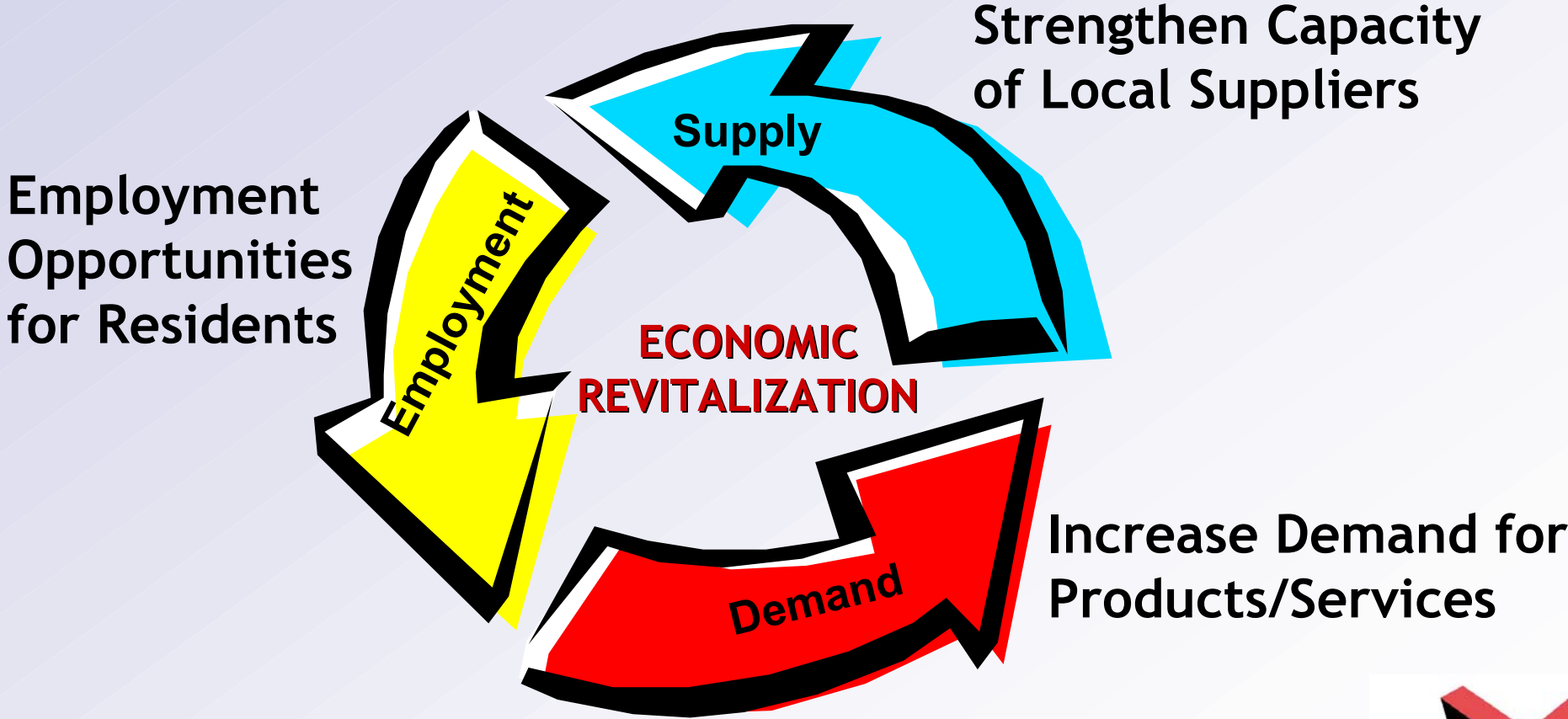
Strathcona Business Improvement Area



Change and Growth in the Downtown Eastside



Key Strategies



Increase Demand for DTES Products

- Improve safety and security
- Take advantage of key economic drivers



2010 Winter Games Inner-City Inclusive Committee



Storyeum



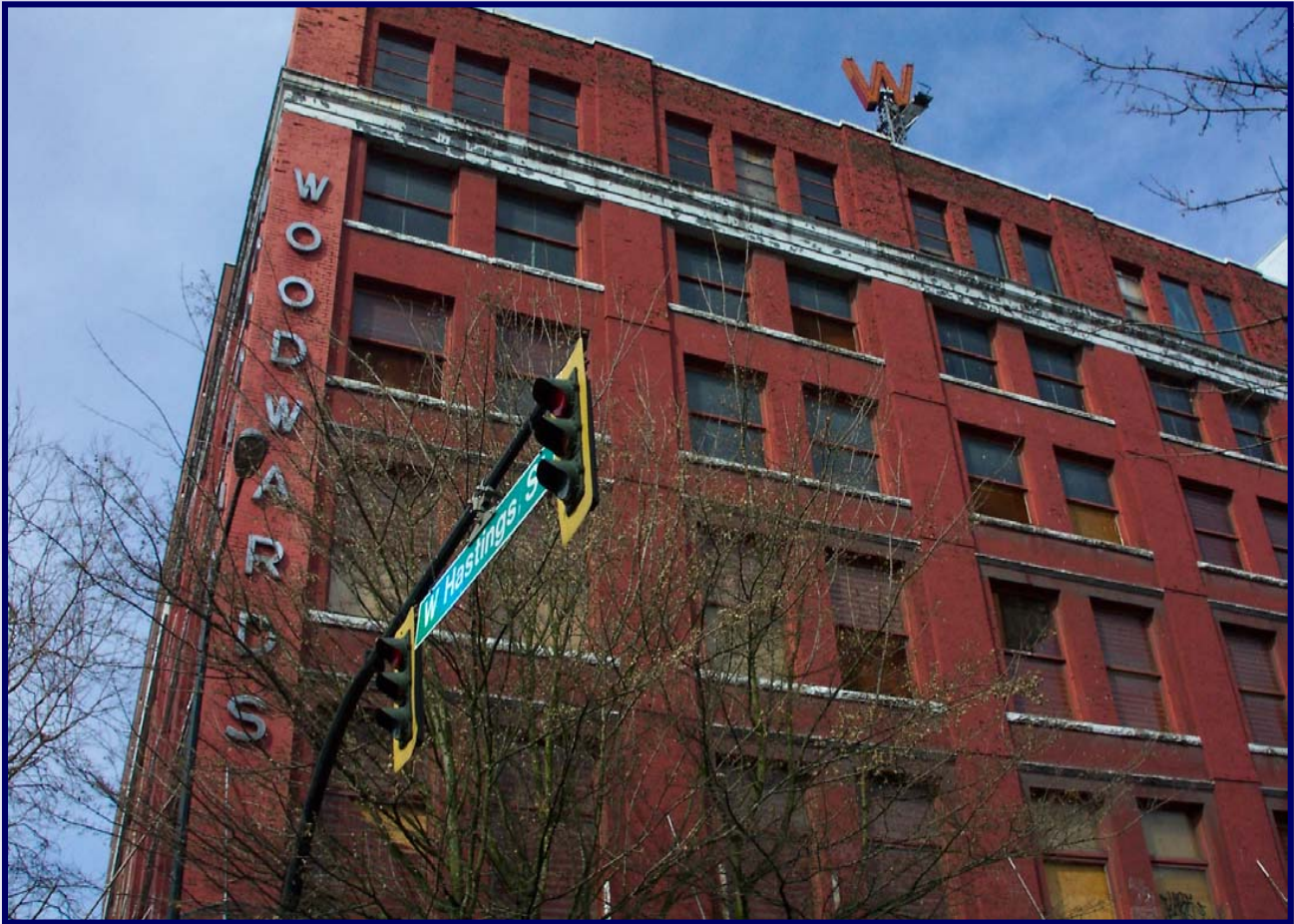
Picade images courtesy of Henssler Partners Architects & City of Vancouver



original structure



Purchase and Redevelopment of Woodward



Increase Demand for DTES Products

- Improve safety and security
- Take advantage of key economic drivers
- Develop housing



Non-Market Housing



Market Housing



Increase Demand for DTES Products

- Improve safety and security
- Take advantage of key economic drivers
- Develop housing
- Create strong neighbourhood brands



Increase Demand for DTES Products

- Improve safety and security
- Take advantage of key economic drivers
- Develop housing
- Create strong neighbourhood brands
- Upgrade Appearance, Strengthen Links



Carrall Greenway



Chinese Cultural Centre and Gardens



Strengthen Capabilities of Local Suppliers

- Upgrade Building Infrastructure
 - Increase Business Retention and Expansion
 - Attract New Business
 - Improve Readiness of Local Suppliers
-



Vancouver Agreement Employment Strategy

Focus on multi-barriered DTES residents

- **Continuum of Services**
- **Assessment - Employment Readiness Scale**
- **Employment - on the job supports**
- **Case Management**



Conclusions

Downtown Eastside will Revitalize

- Build on Historic Urban Fabric/Strategic Location
- Revitalization without Displacement

Key Strategies Well Underway

- Safety, Woodward's, Heritage/ By-law changes, Carrall Greenway, Housing



Further Work

- Business Retention and Attraction
- Housing Plan
- Improve Safety - Especially for Women
- Focus on Strathcona Business Area
- Linking Job Training to Real Jobs
- Develop an Institutional Framework to Implement Plans

